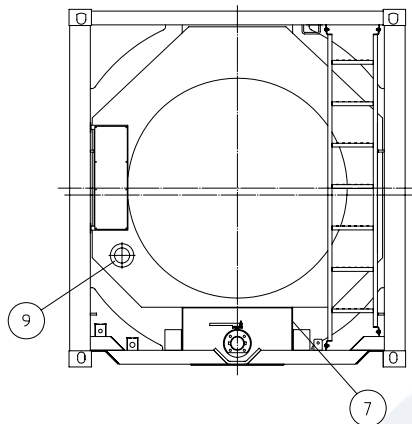
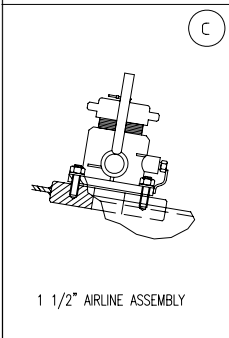
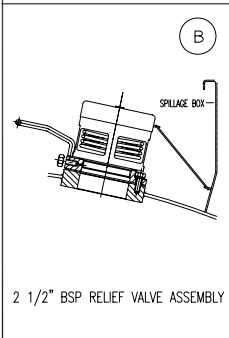
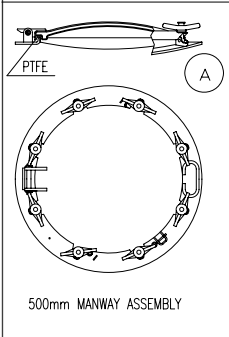
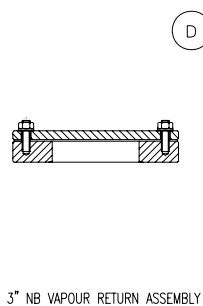


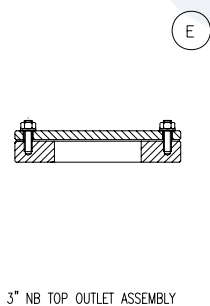
FRONT END



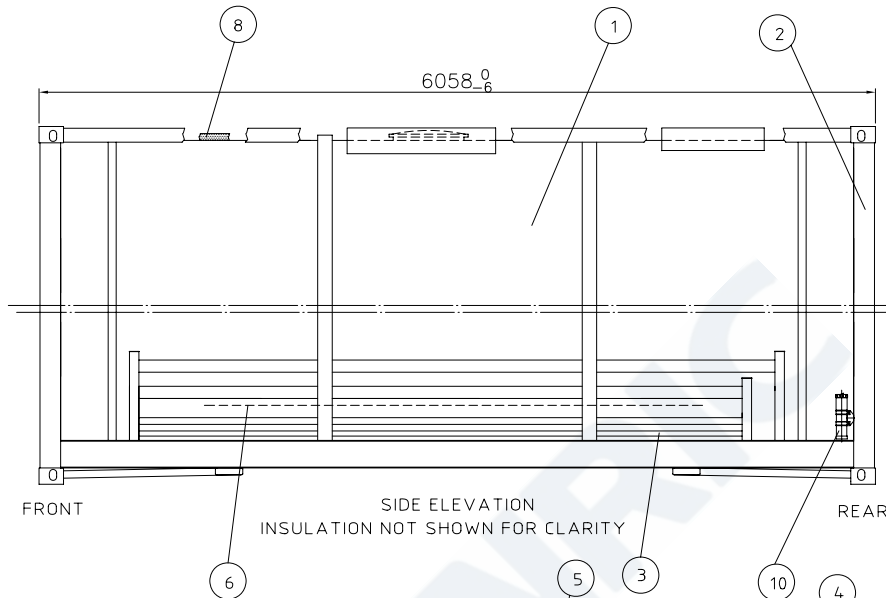
REAR END



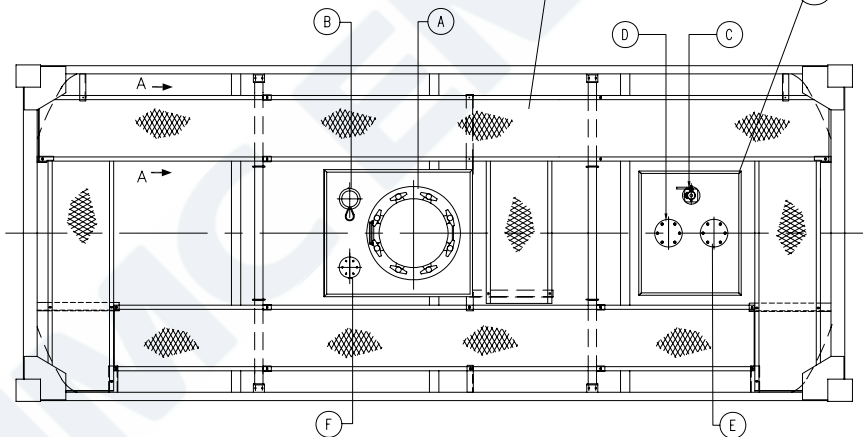
3" NB VAPOUR RETURN ASSEMBLY



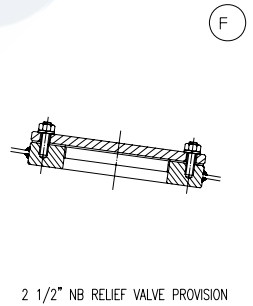
3" NB TOP OUTLET ASSEMBLY



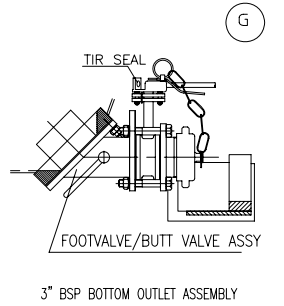
FRONT SIDE ELEVATION REAR  
INSULATION NOT SHOWN FOR CLARITY



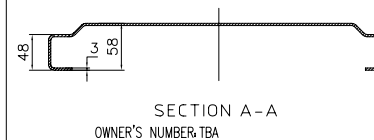
PLAN



2 1/2" NB RELIEF VALVE PROVISION



3" BSP BOTTOM OUTLET ASSEMBLY



R2	17.Apr.2014	NEW DRAWING	Shen Y
REVISION	DATE	MODIFICATION	MOD. BY

SPECIFICATION

CODES AND REGULATION	UN PORTABLE TANK (T11 IMDG, CFR49, ADR/RID) UIC, TIR, CSC, TC ASME ■ DIV 1, ISO 1496-3
M.P.G.M.	36000 kg ( 79365 lbs )
TARE ( INSULATED ) MASS(±3%)	3500 kg ( 7715 lbs )
PAYLOAD	32500 kg ( 71650 lbs )
DESIGN PRESSURE	TANK 4 BAR HEATING COILS 6 BAR
HYDROSTATIC TEST PRESSURE	TANK 6 BAR HEATING COILS 9 BAR
WORKING PRESSURE	HEATING COILS 4 BAR
MAXIMUM EXTERNAL PRESSURE	0.41 BAR
TANK MATERIAL	316L equivalent, max carbon content 0.03%
CONTAINER SIZE	6058 mm lg x 2438 mm wide x 2591 mm high
TANK SIZE ( INTERNAL )	2200 mm I/DIA x 5916 mm lg ( VOLUME 21 m <sup>3</sup> )
VESSEL DESIGN TEMPERATURE	-40°C-130°C (-40°F-266°F)
RADIOGRAPHY	SHELL (SPOT AND ALL "T" JOINTS) DISHED END (100%)
LEAKAGE TEST	YES
CAPACITY(0,+2%)	21000 LITERS (5550 US GALLONS)
INSULATION:SHELL,HEADS	50mm ROCKWOOL WHERE NECESSARY AS DRAWING NO: NTC-4151I
CLADDING SHELL MATL/COLOR	1.8mm THK GRP/ WHITE (RAL 9010)
CLADDING HEADS MATL/COLOR	2mm THK GRP/ WHITE (RAL 9010)
FINISH: SHOTBLAST	SA 2 1/2
FRAME CORROSION PROTECTION	40+40+40* ( 3 LAYERS)
TOP COAT COLOUR	BLUE(RAL 5002)
SHELL ANTI STRESS CORROSION LACQUER	80+
INSPECTION AUTHORITY	LR

NOZZLE LIST					
SYMBOL	NOMINAL SIZE	NOMINAL PRESSURE (BAR)	CONNECTION STANDARD	SEALING FACE	USAGE OR DESCRIPTION
A	500		MAN-4151		MANWAY
B	2.5"	4.4	RV-4151	SCREW	RELIEF VALVE
C	1.5"		AIR-1.5"-01(FV)	SCREW	AIRLINE
D	3"		TOP-3"-01(FV)	PLANE	VAPOR RETURN PROVISION
E	3"		TOP-3"-01(FV)	PLANE	TOP OUTLET PROVISION
F	2.5"		RVP-2.5"-01(FV)	PLANE	RELIEF VALVE PROVISION
G	3"		BDC01-00002-B	SCREW	BOTTOM OUTLET

ITEM	DESCRIPTION	DWG No.	MATERIAL	QTY.
10	DOCUMENT HOLDER	06210-00004-B		1
9	THERMOMETER (-40°C TO +160°C)	WTYZ-1032-TAL		1
8	INSULATION & CLADDING	NTC-4151I		1
7	OUTLET TRAY DETAIL	NTC-41510T		1
6	REMOTE CLOSURE	NTC-4151R		1
5	WALKWAY ASSEMBLY	NTC-4151W		1
4	SPILLAGE DETAILS	NTC-4151S		1
3	HEATING COILS & VACUUM RINGS	NTC-4151H		1
2	FRAMEWORK ASSEMBLY	NTC-4151F		1
1	VESSEL DETAILS	NTC-4151V		1

NANTONG CIMC TANK EQUIPMENT CO., LTD.

TITLE: 20'x8'x8'6" GENERAL ARRANGEMENT			
OWNED BY:	(21m <sup>3</sup> )	SCALE:	1 : 20
DRAWN BY:	Shen Y 2014.04.17	WEIGHT:	KG. QTY.: 1
CHECKED BY:	Jiang KP 2014.04.17	DWG No.:	NTC-4151G
APPROVED BY:	Fu WX 2014.04.17	SHEET	OF SHEETS
ISSUE:		R2	
THIS DRAWING AND ALL COPIES THEREOF ARE CONFIDENTIAL AND THE PROPERTY OF CIMC-NANTONG. ANY PART DRAWING SHALL NOT BE COPIED, REPRODUCED, DISCLOSED OR DISTRIBUTED TO A PARTY WITHOUT PRIOR WRITTEN APPROVAL FROM CIMC-NANTONG.			